



# D/2 Biological Solution

*Discover the D/2 difference!*

Buy D/2 online at [www.BeeckMineralPaints.com](http://www.BeeckMineralPaints.com)



D/2 Biological Solution is a biodegradable, easy to use liquid that removes stains from mold, algae, mildew, lichens and air pollutants. It is effective on marble, granite, limestone, brownstone, travertine, masonry, terra cotta, concrete, stucco, wood, and other architectural surfaces including monuments, sculpture and headstones. A contact time of only 10 to 15 minutes followed by scrubbing with a soft nylon or natural bristle brush will loosen most biological and air pollutant staining.

D/2 Biological Solution is effective for removing harmful biological and air pollutant staining from many building materials including masonry, marble, granite, limestone, brownstone, travertine, terra cotta, concrete, stucco, wood, canvas and vinyl & aluminum siding.

## Features and Benefits

- **Fast acting:** 10 to 15 minutes contact time for great results.
- **Biodegradable**
- **Contains no acids, salts, or chlorine**
- **pH neutral**
- **Will not etch metals or glass**
- **Safer to use around plantings**
- **Is not a hazardous material and requires no special handling or protection**
- **Use full strength, no in-field mixing required**
- **Shelf life of 5 years**

## Application Procedures

Always do a spot test sample before proceeding with project. D/2 works best when air and surface temperatures are 45°F or above. Use D/2 undiluted for best results. In the event of

excessive plant exposure, rinse all plants and water in all planted ground areas.

### Immediate Result Method

1. Apply D/2 Biological Solution with a brush, roller, hand pump sprayer (garden style pump sprayer) or low pressure power sprayer.
2. Allow undiluted D/2 to remain on the surface 10-15 minutes.
3. Apply additional D/2 as necessary to maintain a wet surface.
4. Scrub with soft nylon or natural bristle brush. **DO NOT USE METAL BRUSH.**
5. Lightly mist with water and continue scrubbing.
6. Rinse thoroughly with clean, potable water.

### No Scrub/No Rinse Method

1. Apply D/2 Biological Solution with a brush or pump sprayer to a dry surface. Do not pre-wet the surface.
2. Allow to dry. Repeat if there are heavy biological stains.

D/2 works with the elements and results occur within one week to one month depending on severity of growth and weather conditions. The surface will become cleaner over time as the subsurface biological stains release.

## Safety Information

D/2 Biological Solution is non-mutagenic, and contains no carcinogenic compounds as defined by NTP, IARC, or OSHA. It is considered essentially non-toxic by swallowing, as it has an oral LD50 of 2.0 g/kg of body weight. No special ventilation is required during use.



## Packaging and Coverage

D/2 Biological Solution is available in 1 gallon and 5 gallon containers, and 55 gallon drums. The area that can be treated with one gallon of D/2 will vary considerably as a function of the nature and extent of biological deposits, as well as the physical characteristics of the surface. Typical coverage to remove medium deposits will vary from 250 to 350 square feet per gallon.

## Technical Data

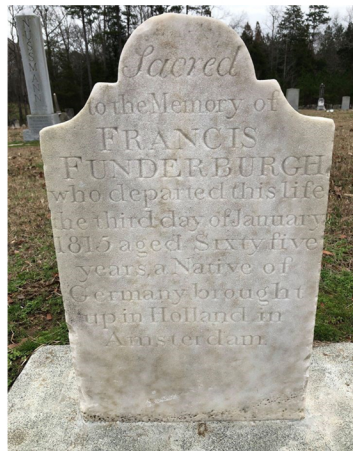
Physical Form . . . . . Transparent, low viscosity liquid  
Color . . . . . Almost colorless  
pH . . . . . 9.5  
Specific Gravity . . . . . 1.01g/cc  
Solubility in Water . . . . . Complete  
Vapor Pressure . . . . . 25 mm Hg @ 20°C

**Notice:** The information contained herein is based on our own research and the research of others, and it is provided solely as a service to help users. It is believed to be accurate to the best of our knowledge. However, no guarantee of its accuracy can be made, and it is not intended to serve as the basis for determining this product's suitability in any particular situation. For this reason, purchasers are responsible to make their own tests and assume all risks associated with using this product.

10/2012



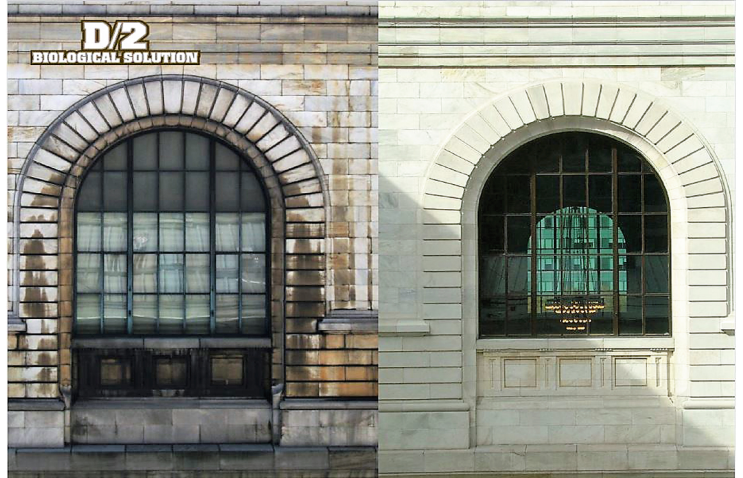
Before D/2



After D/2

## Gravestone Cleaning

Buy D/2 again at  
[www.BeeckMineralPaints.com](http://www.BeeckMineralPaints.com)  
email: [info@BeeckMineralPaints.com](mailto:info@BeeckMineralPaints.com)  
Tel. +1 704-940-3603



## Building Facade Cleaning



## Architectural Elements



## Sidewalks and Driveways